



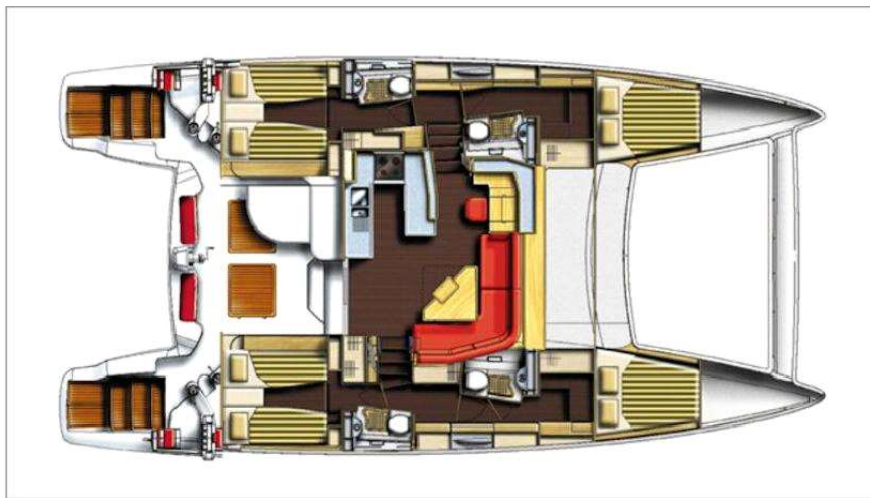
CATANA 50 "LOUARN" (2011)
refit 2017
VERSION 4 CABINS



LOUARN, manufactured in 2011 by CATANA, was managed in charter from 2012 to 2016 by the company Dream Yacht Charter in Martinique. A complete refit was carried out during the first six months of 2017 to repair the deficiencies of the charter and complete its equipment so that she becomes a safe and comfortable boat for a large cruising program. This program was limited to a discovery of the West Indies, the USA Atlantic and Canada Atlantic because it was interrupted by COVID 19. A cargo repatriation during the pandemic allowed us to find her in the Mediterranean. We had to go back to the Caribbean but the

management of health problems of the owners was very complicated so they have decided to put her back on the second-hand market

Manufacturer	:	CATANA
Type	:	Catana 50, Drift catamaran
Year of construction	:	2011
Hull length	:	15.20 m
Hull width	:	7.90 m
Draught	:	1.20 m/ 3.00 m
Air draught	:	25.00 m (All, including antennas)
Diesel tank	:	2 x 440 litres in mat foot
Fresh water tank	:	2 x 500 litres under the floor of AR cabins
Double cabins	:	4
Toilet/ shower cabinets	:	4 with grey water tanks
Electric toilets on fresh water	:	3, Engines changed in 2018, with water tanks black
General lighting	:	LED year 2017
Main lights, Tri-white mast head lights	:	LED year 2018
Anchorage lights	;	LED year 2018



Epoxy coating of the hull in 2018 (2 layers) and anti-fouling Cooper Coat (5 layers theoretical). The Cooper Coat is a mixture of copper and epoxy. Not having had all the promised diapers, we were obliged in 2023 to make a type VC 17 antifouling. Currently there will be a VC Offshore, compatible VC17 international because the VC 17 no longer exists.

SAILS

The sails of LOUARN are cruising sails in Dacron, Changed in 2017

Mainsail : GV lattice of 100 m², 5 lattices, 3 strips of rice, on HARKEN trolleys with SELDEN latte boxes

Gennaker : On HARKEN reel with a surface of 100 m²

Solent auto-vireur : On HARKEN reel with a surface of 36 m²

Solent Draught Adjustment :

By HARKEN

The bottom of the mat (which the whole of the sheave laid at mat. Disassembly by wir

Gennaker Draught Adjustment :

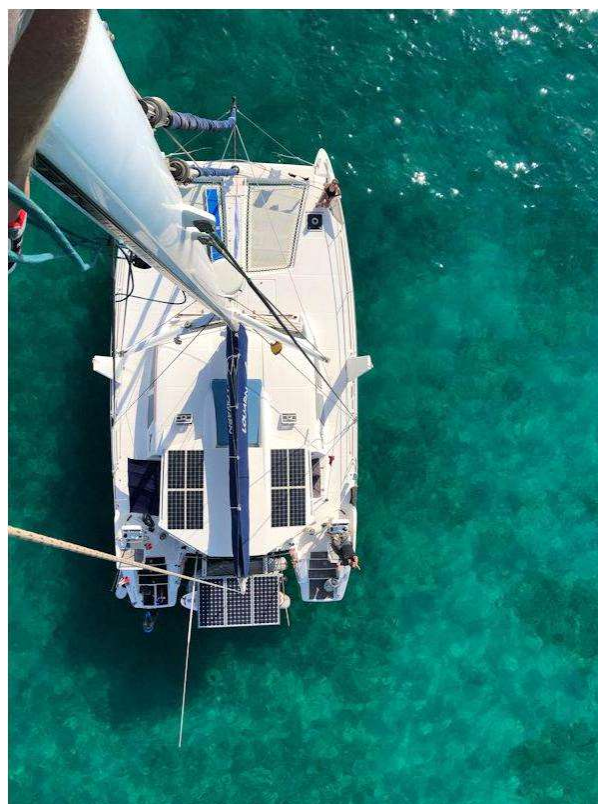
By HARKEN

The bottom of the mat (which the whole of the sheave laid at mat. Disassembly by wir

GV Sheave Adjustment : By returning to the cockpit

Adjustment of the spi : By winch at the foot of mat

Spi Preequipment : Yes – the halyard is passed, the
are not present but the revers



Winches HARKEN :

2 units 48.2ST – 05, 2-speed, self training, for drifts, spi arms and winders

2 units 60.2ST, 2-speed, self-training, for Gennaker

2 units 48.2ST – 05, 2-speed, self training, for listening to mainsail

1 unit 53.2STE-HY electric 24V for SGS draught, Topping lift for main, mainsaili Listening Point, Listen to Solent Self tacking, Point 1-2 and 3 Snaps, Point 1-2 and 3 Monitoring Stations.

1 unit at mast foot MRW-01 50-2ST for halyard Solent, Gennaker, Spinnaker

ENGINES

Volvo D2 75 engines : 2 turbocharged engines of 75 hp on saildrive with Water Exchange Glycolée/ Seawater

Propellers : 2 Volvo Penta 4-blade folding propellers. Hub Port changed in 2022

Average consumption : 4.5 litres per hour at 1800/2000 rpm/min

Current engine time : Port engine: 2,328 h (Engine changed in 2015)
Starboard engine: 4759 h



Engine controls

ZF Marine electric to control the 2 engines of the 2 helm stations. Set changed in 2018



Main winch and lathe on starboard helm post

Engines alternators :

Each engine is equipped with 2 alternators: 1 in 12V for the motor battery (1 unit changed in 2023) and the other in 24V for the service batteries

Main service completed in 2018 by VOLVO au Marin in Martinique on 2 engines and bases

Last revision completed In September 2023 by Nautica Del Este in Motril, Spain (VOLVO agent)

TENDER

Branc : TOHATSU 18 cv 2 temps January 2018

Orange marine January 2018 (Length 3.30 m)

Two-stroke engine



CHARGES AND BATTERIES

12V engine batteries	:	2 or 1 per engine type AGM 120 Ah. Batteries changed in 2020
Service batteries	:	4 x Mastervolt AGM 12 V x 225 Ah batteries coupled in 24 V (2 by 2) for a total of 450 Ah in 24 V. Batteries changed in 2017
Power of 24V alternators	:	110 Ah 1 changed in 2017 1 changed in 2022
Alternator regulators 24V	:	Mastervolt Alfa Pro III changed in 2018
Converter, 220V - 24V charger	:	VICTRON Energy 3000 W with repeater on the table card. Dock loads up to 80A, changed to 2018
Solar panels	:	Total capacity about 1 500W 8 panels of 100W peak unit in 24V mounted in 2 blocks of 4 on the roof on regulator NPT 100

3 panels of 220W peak unit in 24V mounted on AR support above the annex supports on NPT 100 regulator

GROUPE Electrogène

- Cummins ONAN generator set : 7 kVA in 220 V, diesel with cooling Water from sea to port main tank. Cards electronic changed in 2018
- Escape : Possibility of taking water out of cooling below the waterline to make silent operation
- Start command : electric at the card table
- Starter battery : changed in 2017



Anchages

- Windlass : FALKON Type LOFRANS' 1700 W, 24V for chain at 12 mm pitch. Revised by LOFRANS USA in 2019
- Chain of anchorage : 100 meters of chain at 12 mm high pitch resistance 70 kg, chain cable force 7, double galvanized, changed in 2019. Manufacturer « Limo Chainworks
- Main anchorage : Weight 50 kg, Stainless steel Type «SPADE»

Auxiliary mooring : 25 ml of 10 mm chain on 30 ml of cable,
flat anchor type Plastimo 20 kg approximately

Photos taken during the channel change in 2019

LIFERAFT

Brand ZODIAC 10 places reference OPEN SEA 10 ISO 9650 1B

Last revision : 20 May 2021 next revision done on 20 May 2024

THRU HULLS : All have been changed in 2022

GUARDRAILS : Changed by stainless steel tube on two levels

WATERMAKER

Brand : AQUABASE Watermaker

240 litres per hour, with 4 membranes type YC4

C50 in 220 V. Starting from salon

AIR CONDITIONNING

Brand WEBASTO (water with glycol)

Power : 36000 BTU in 220V

6 units, 1 per cabin and 2 in salon



FRIGOBOAT fridge

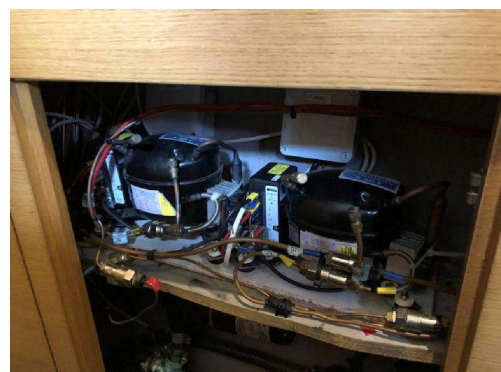
1 type top table 60 liters stainless steel with remote hermetic compressor and sea water condenser.

Electronic cards changed in 2018

FRIGOBOAT Freezer

1 type top table 60 liters stainless steel with remote hermetic compressor and sea water condenser.

Electronic cards changed in 2018



- Hot water boilers : 2 of 40 litres stainless steel brand WEBASTO
- Sink : 2 stainless steel trays with EF, EC distribution and Sea water, with greywater tank
- Cooking Pan : 4 gas fires stainless steel
- Built-in gas oven : Dimensions 60 x 60 cm
- Gas cylinders : 2 bottles 15 kg propane



- Microwave oven : 27 litres turntable, 220 V, stainless steel, year 2022
- Ice maker : Brand PROLINE, 1 litre capacity, filling manual, 220 V, year 2017
- Washing machine for laundry : Brand DAEWOO, capacity 3 kg, 220V year 2017



NAVIGATION and ELECTRONICS equipment

All electrical and electronic systems of the boat were changed in 2018 (except portable equipment) following a lightning strike received in the USA Fort LAUDERDALE (Florida). This change was made by MAZ Oceans following the advice of the marine surveyor. The electrical and electronic cables on the mast have also been changed.

- Brand of all devices : FURUNO.
- Chart plotters : 2 12' TZT2 displays (1 per control station) with MAX Sea or Furuno mapping
- Displays and Repeaters : FI70 (Multi with programming according to the choices) at number of 9 - (2 on table a chart, 3 on salon band, 2 on each of the 2 Helm posts
- GPS : 6
 - 1 for the Furuno network
 - 1 for ISA
 - 1 for VHF and BLU ASN
 - 1 included in each bar station shelf
 - 1 GPS type mouse connectable in USB on PC
- AIS : FA50 transmitter/ receiver (with the possibility of Cut the show)
- Autopilot : 2 connected to the network - (hydraulic systems

and electronics completely separated, a mounted on each bar so you can change driver without mechanical modification) type 711 C with Hydraulic cylinders Lecomble & Schmitt.



Giro compass

:

2 or 1 per autopilot



WindVane/ Anemometer / Speedo/ Water temperature Radar



- 1 at the mast head + 2 Windex



- 1 reference DS4 DNXT radome of 4 kW with display superimposed on posts of bar and/or PC



Other brands

- | | | |
|------------------|---|--|
| Antenna splitter | : | 1 of the Digital YACHT brand for use by the mast head VHF antenna and possibility of Emergency VHF antenna connection |
| VHF | : | 1 Fixed M 424 G, power 25W, brand ICOM with ASN with external GPS and AIS interface. Antenna in mast head and backup antenna on the back of vessel on mat 3 ml

1 Mobile M1 EURO 5, power 1W or 5W, brand ICOM |
| WALKIE TALKIE | : | 2 units MOTOROLA TLKR, 1 W on private network |
| SSB | : | 1 brand ICOM IC M802 with box agreement automatic AT 140 and ASN with a power of 150 W. Emission/ Reception from 0 to 30 MHz. Factor of connection to PC for weather maps. Antenna of 7ml at the back of the boat |
| Iridium | : | Iridium portable reference MOTOROLA EXTREME 9575 with antenna connection on intermediate arrows of the mat |

Distress beacon	:	1 of the brand OCEAN signal reference E100G, 406/121.5 Mhz
Positioning tag	:	Brand DOLINK issue position 3 x per day via satellite, and boat move alert
Hot Spot Wifi	:	Wifi reception system with antenna on bars of intermediate arrows of the mat and reissue in the boat on private Wifi network
ShipModul	:	Retransmission in wifi of all the data of the network Furuno and GPS instruments for reading on tablet
Ethernet network	:	Complete FURUNO element network with NMEA 2000 transformer, Connection of all instruments on PC per switch Ethernet
Repeater screen on CHART table	:	1 brand ACER 19.5' ' LCD, 220 V
Printer, scanner	:	CANON colour inkjet
PC Connection Dock	:	1 DELL brand for laptop connection No laptop provided, this one being Personal, but possibility of total connectic with MAX SEA Time 0





LIVING PART



Kitchen area



Chart table



Fold-out salon table



Cupboard has been waxed



Forward cabins : 2 with a huge chest in the lower part



Rear cabins : 2 organized in 2 single beds or 1 double bed



Cockpit and teak cockpit table



Teak replaced with Flexitek in 2023 for steps of descents in the transoms & covers of cockpit chests.



Trampolines



Carbon Trim and Spi Preequipment



Pre-equipping of spi on the front bow peaks

Currently the boat is on dry in Motril. The water release is carried out as soon as a buyer confirms and may vary according to availability of dry places in the site. A number of projects are planned and organized to

- Antifouling type VC Offshore International
- Polish the hull and repair any impacts or scratches
- Air conditioning repair
- Overhaul of sails (Solent, Gennaker, GV) that are at the sailboat for washing, overhaul and possible repair

--- this inventory is not contractual and is only given as informative, and not under the broker's responsibility ; any potential buyer will do everything at his disposal for checking these specifications and general condition of the vessel ---